



Electrolux

Blast Chillers CW Blast Chiller Crosswise - 28 kg

ITEM # _____

MODEL # _____

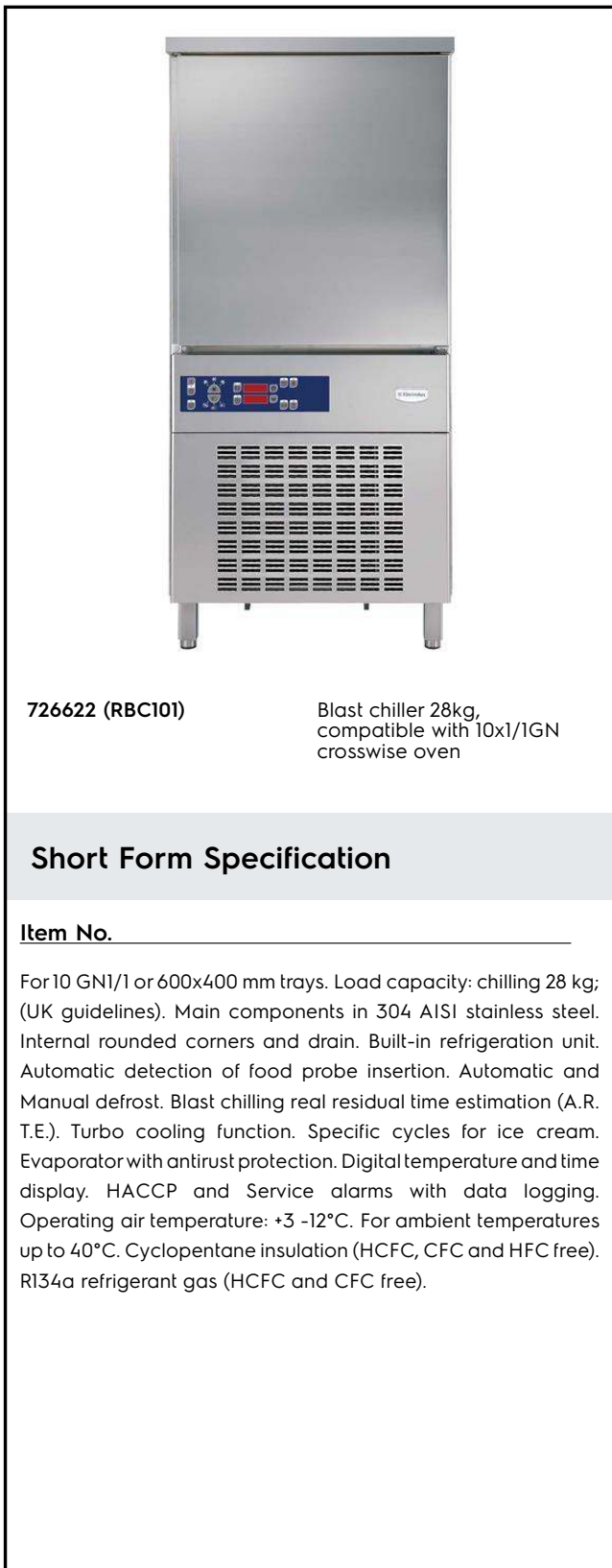
NAME # _____

SIS # _____

AIA # _____



Electrolux



726622 (RBC101)

Blast chiller 28kg,
compatible with 10x1/1GN
crosswise oven

Short Form Specification

Item No. _____

For 10 GN1/1 or 600x400 mm trays. Load capacity: chilling 28 kg; (UK guidelines). Main components in 304 AISI stainless steel. Internal rounded corners and drain. Built-in refrigeration unit. Automatic detection of food probe insertion. Automatic and Manual defrost. Blast chilling real residual time estimation (A.R. T.E.). Turbo cooling function. Specific cycles for ice cream. Evaporator with antirust protection. Digital temperature and time display. HACCP and Service alarms with data logging. Operating air temperature: +3 -12°C. For ambient temperatures up to 40°C. Cyclopentane insulation (HCFC, CFC and HFC free). R134a refrigerant gas (HCFC and CFC free).

Main Features

- Blast Chilling cycle: 28 kg from 90°C up to 3°C in less than 90 minutes.
- Soft Chilling (air temperature -2°C).
- Hard Chilling (air temperature -12°C).
- Holding at 3 °C for chilling, automatically activated at the end of each cycle, to save energy and maintain the target temperature (manual activation is also possible).
- Turbo cooling: chiller works continuously at the desired temperature; ideal for continuous production.
- Control unit provides two large displays to read out: time, core temperature, cycle countdown, alarms, service information.
- Two customizable cycles (P1 & P2) for each operating mode, allowing to set the time and air temperature. These programs can be converted into ice-cream specialized cycles (shape maintenance and holding).
- All information related to the different operating models are recorded: date, time, cycle, core temperature, holding temperature, HACCP accordance.
- Probe-driven cycles feature ARTE (Algorithm for Remaining Time Estimation) to make planning the activities easier.
- Single sensor core probe as standard.
- Performance guaranteed at ambient temperatures of +40°C.

Construction

- Refrigerant type: R134a.
- High density polyurethane insulation, 60 mm thickness, HCFC free.
- Magnetic, easy-to-remove heated gaskets.
- 304 AISI stainless steel construction throughout.
- Seamless hygienic inner cell with all rounded corners for easy cleaning.
- Swing hinged front panel for easy service access to main components.
- Ventilator swinging hinged panel for access to the evaporator for cleaning.
- No water connections required.
- Waste water can be plumbed into drain, but can also be collected in an optional waste container.

APPROVAL: _____



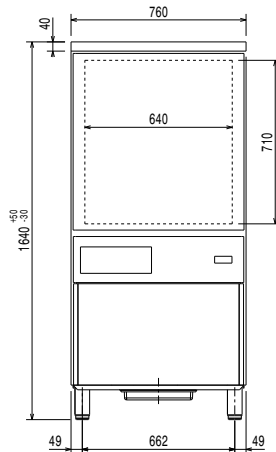
Included Accessories

- 1 of 1 single-sensor probe for blast chiller PNC 880213 and blast chiller&freezers

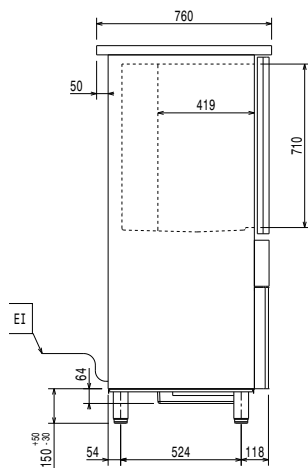
Optional Accessories

- Kit for HACCP advanced connection for LW and CW blast chiller&freezer PNC 880183
- 3-sensor probe for blast chiller and blast chiller/freezers PNC 880212
- 1 single-sensor probe for blast chiller and blast chiller&freezers PNC 880213
- Rilsan grid 600x400mm PNC 880864
- Plastic coated grid 1/1GN PNC 881061
- 4 wheels for blast chillers and blast chiller/freezers PNC 881097
- Roll-in guide runners for 28 kg blast chillers and blast chiller&freezers 1/1GN PNC 881518
- Pair of 1/1GN AISI 304 stainless steel grids PNC 921101
- 80mm pitch side hangers 10x1/1GN electric oven PNC 922115
- 80mm pitch side hangers 10x1/1GN gas oven PNC 922116
- 60mm pitch side hangers 10x1/1GN electric oven (included with the oven) PNC 922121
- 60mm pitch side hangers 10x1/1GN gas oven (included with the oven) PNC 922122
- Trolley for 10x1/1GN and 10x2/1GN roll-in rack PNC 922128
- Trolley for 10x1/1GN roll-in rack PNC 922130
- Kit to convert to 10x1/1GN roll-in rack PNC 922201

Front

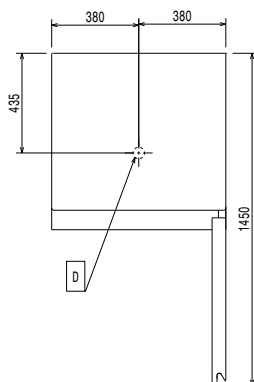


Side



EI = Electrical inlet (power)
RO = Refrigerant Outlet

Top



Electric

Supply voltage:

726622 (RBC101) 220-240 V/1 ph/50 Hz

Electrical power max.:

1.21 kW

Circuit breaker required

Installation:

Clearance:

5 cm on sides and back.

Please see and follow detailed installation instructions provided with the unit

Capacity:

GN:

10 - 1/1 containers

Key Information:

External dimensions, Width: 760 mm

External dimensions, Height: 1640 mm

External dimensions, Depth: 760 mm

Shipping weight: 145 kg

Shipping volume: 1.3 m³

Refrigeration Data

Refrigerant type: R134a

Refrigeration power: 1419 W

Refrigeration power at evaporation temperature: -10 °C

Refrigerant weight: 1530 g

Product Information (Commission Regulation EU 2015/1095)

Energy consumption, cycle (chilling):

0.053 kWh/kg

Chilling Cycle Time (+65°C to +10°C):

116 min

Full load capacity (chilling):

40 kg