

## STM615

### Ecomat Bench Top Sheeter

W 2420mm x D 1072mm x H 535mm

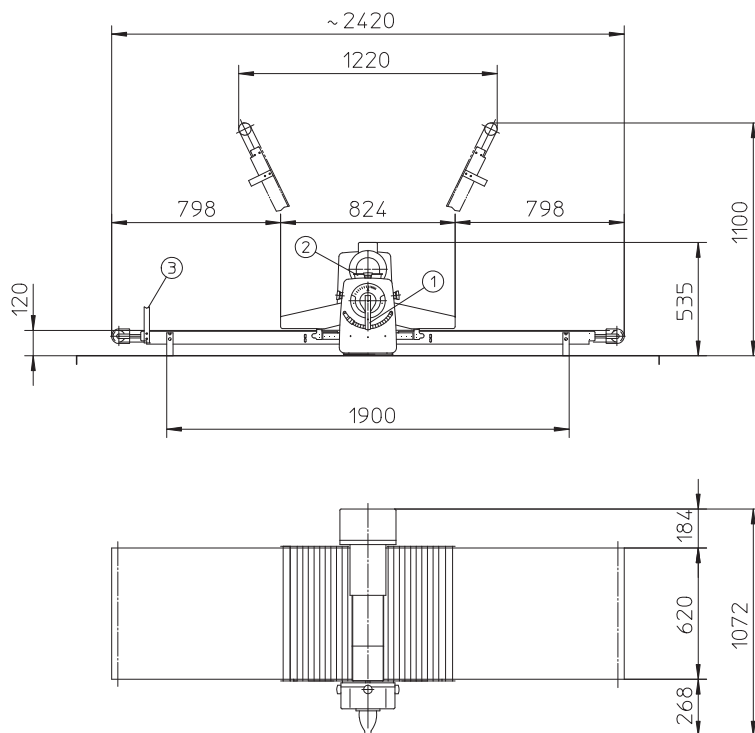
#### Product Features

- Bench mounted manual pastry sheeter
- Side push button control
- Pistol grip roller adjustment
- Fold up tables
- Roller gap 0.5 – 30mm
- Roller width 633mm
- Table width 620mm
- Conveyor belt width 605mm
- Overall conveyor length 2420mm
- Speed of discharge conveyor 50cm/sec
- Recommended dough block weight 6 – 8kg



STM615

## STM615 Ecomat Bench Top Sheeter



Australia  
www.moffat.com.au  
New Zealand  
www.moffat.co.nz

Australia  
Moffat Pty Limited

Victoria/Tasmania  
740 Springvale Road  
Mulgrave, Victoria 3170  
Telephone 03-9518 3888  
Facsimile 03-9518 3833  
vsales@moffat.com.au  
www.moffat.com.au

New South Wales  
Telephone 02-8833 4111  
nswsales@moffat.com.au

South Australia  
Telephone 03-9518 3888  
vsales@moffat.com.au

Queensland  
Telephone 07-3630 8600  
qldsales@moffat.com.au

Western Australia  
Telephone 08-9202 6820  
wasales@moffat.com.au

New Zealand  
Moffat Limited

Rolleston  
45 Illinois Drive,  
Izone Business Hub  
Rolleston, 7675  
Telephone 03-389 6600  
Facsimile 03-389 6660  
sales@moffat.co.nz

Auckland  
Telephone 09-574 3150  
sales@moffat.co.nz

### Dimensions (Working)

Width: 2420mm  
Depth: 1072mm  
Height: 535mm  
Nett weight: 95kg

### Dimensions (Folded)

Width: 1630mm  
Depth: 1072mm  
Height: 1100mm

### Electrical Requirements

420V, 3P+N+E, 50Hz, 1kW  
Supplied with 3 phase 10amp plug

